

CYBER SECURITY KEYPOINTS

MAY 2025

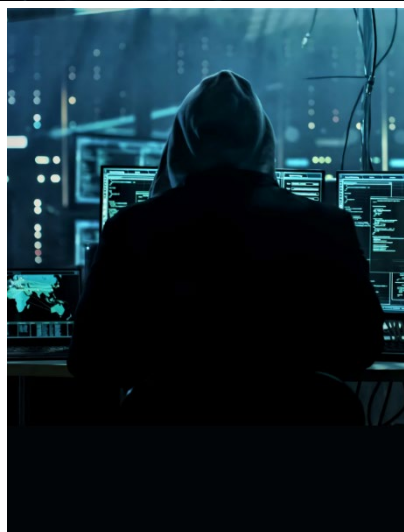
*From the County
Network Security
Cooperative*



AI Procurement

Questions & Strategic Considerations when adopting AI:

- What are the Specific Needs & Goals?
- What are the data requirements?
- What are the ethical considerations?
- What is the total cost of ownership?
- What are the vendor qualifications?



Key Factors to Evaluate

- **Regulatory Compliance:** Assure AI solutions comply with local, state, and federal regulations.
- **Integration with Existing Systems:** Assess how the AI solution will integrate with current IT infrastructure.
- **Scalability:** Ensure the AI solution can scale with the growing needs of your county.
- **Training & Support:** Plan for training staff and ongoing support from the vendor.
- **Risk Management:** Identify potential risks up front and have a game plan.



Potential Public Service Enhancements

- **Public Safety** (predictive policing to allocate resources effectively)
- **Infrastructure Management** (predictive maintenance, traffic management)
- **Citizen Services** (virtual assistants for 24/7 citizen support)
- **Administrative Efficiency** (data analysis and decision support, automating routine tasks such as document processing)
- **Public Health** (chatbots for broadcasting public health information)

Ethical Considerations

- Evaluate potential biases in AI models.
- Verify transparency and accountability in AI decision-making.
- Ensure constituent data remains protected by verifying it is not used to train models available to others.
- Conduct a security assessment and ensure AI solutions follow ethical coding standards.
- Ensure data privacy and security measures are in place.
- Evaluate the return on investment and vet each vendor's experience/expertise.

The County Network Security Cooperative is a collaboration of partners including:



- AND -



Disclaimer: This document reflects current guidance and is subject to change due to the evolving cyber security environment.

