

CYBER SECURITY KEYPOINTS

June

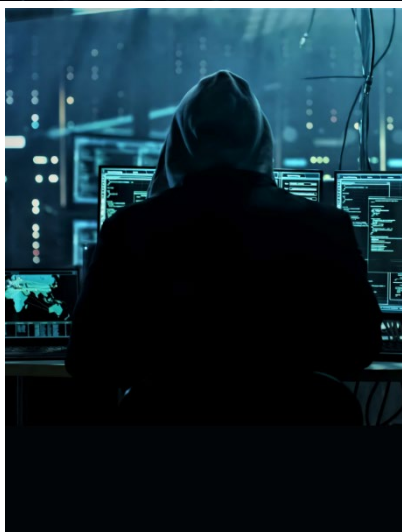
From the County
Network Security
Cooperative



Strong and Unique Passwords:

- 1. Complexity Matters:**
 - Use a mix of uppercase and lowercase letters, numbers, and special characters.
 - Avoid common words or easily guessable patterns.
- 2. Unique for Each Account:**
 - Never reuse passwords across different platforms.
 - If one account is compromised, others remain secure.
- 3. Consider Passphrases:**
 - Combine random words or phrases to create longer, memorable passwords.
 - For example: "BlueSky\$Coffee@2023!"

Strong passwords are your first line of defense against cyber threats!



Tips for Remote Workers to Stay Cyber Secure:

When working remotely, prioritize cybersecurity. Install software updates promptly, and use a VPN for secure connections, especially when using public Wi-Fi. Create strong, unique passwords and secure your home network. Stay informed about common threats and best practices to keep your data safe.



A Virtual Private Network (VPN) is crucial for remote workers. Here's why:

- 1. Securely Transmit Data:**
 - A VPN encrypts your internet traffic.
 - It ensures that sensitive information (like login credentials or company data) remains confidential.
- 2. Access Company Resources Safely:**
 - When connected to a VPN, you can securely access your company's network, servers, and files.
 - This is especially important when working from public Wi-Fi or other untrusted networks.

Work with your IT department to set up a VPN service for whenever you work remotely!

Knowledge is Power

To stay informed about cybersecurity while working remotely, subscribe to reputable newsletters for updates on threats and trends. Regularly search for yourself online to monitor data exposure. Educate yourself on basic security practices to make informed decisions.

The County Network Security Cooperative is a collaboration of partners including:



- AND -



Disclaimer: This document reflects current guidance and is subject to change due to the evolving cyber security environment.